

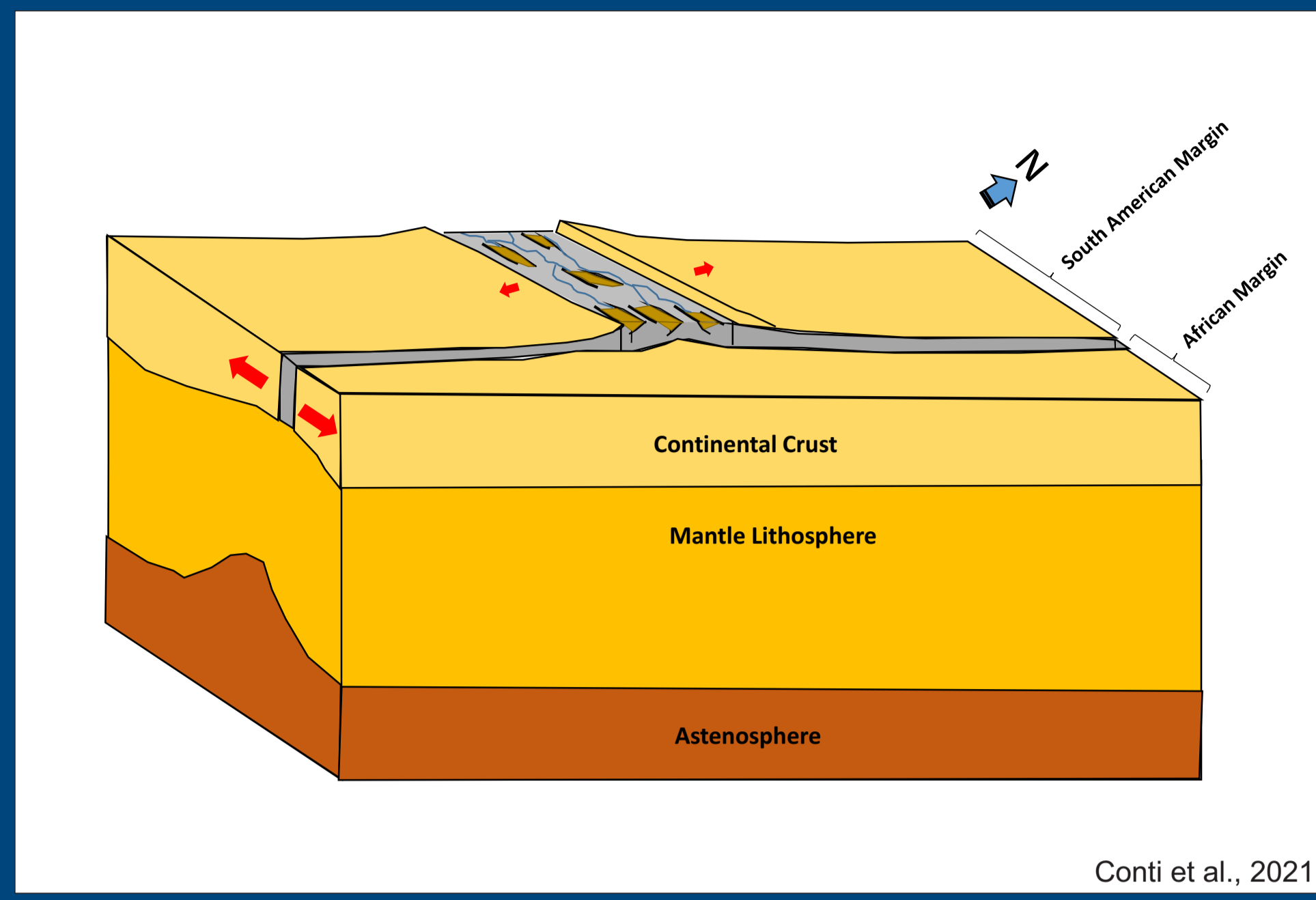
## THE OFFSHORE BASINS OF URUGUAY, NAMIBIA AND SOUTH AFRICA HAVE A COMMON GENESIS

BREAK UP OF WEST GONDWANA (140 Ma)



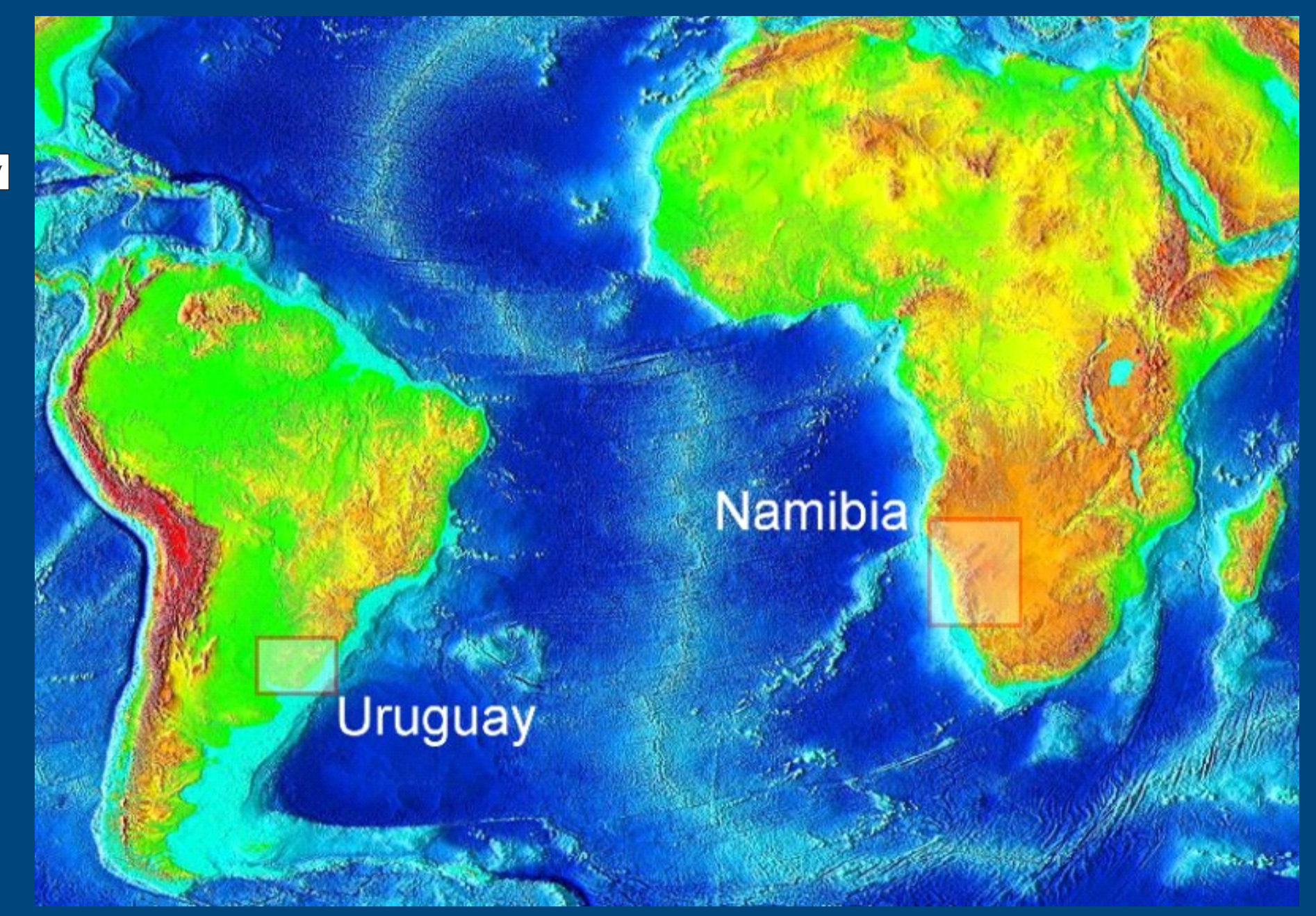
Modified from Scotese C.R. 2014

GEOLOGICAL MODEL OF GONDWANA RIFTING IN THE REGION



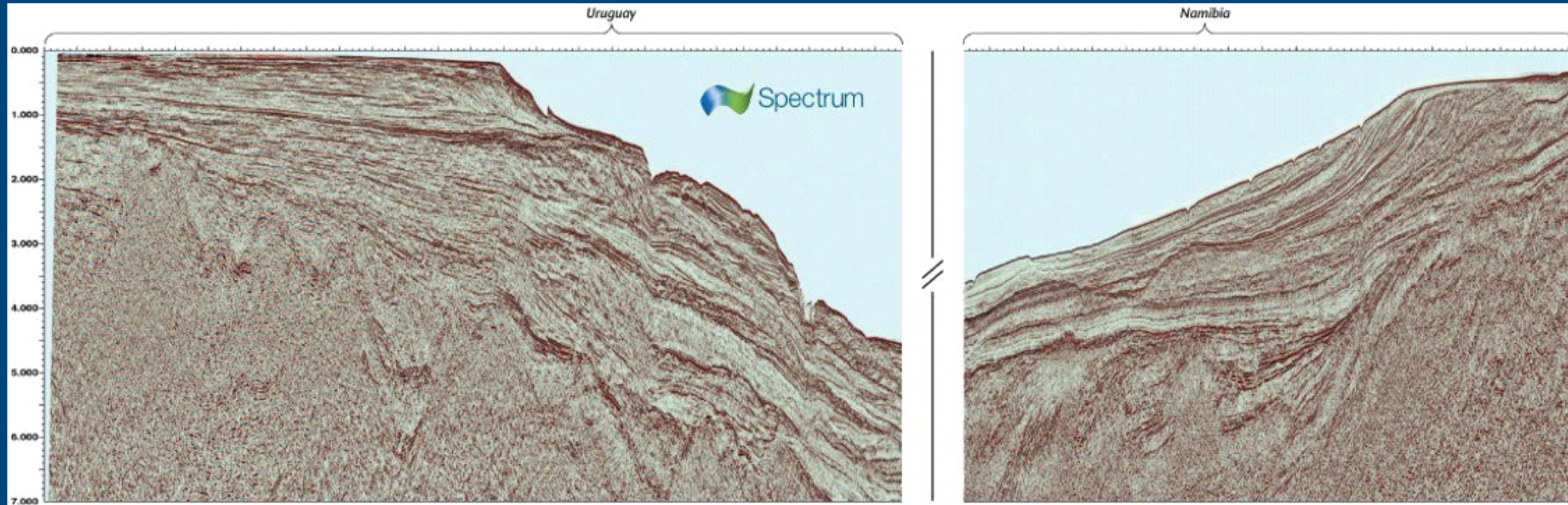
Conti et al., 2021

SOUTH ATLANTIC PRESENT DAY



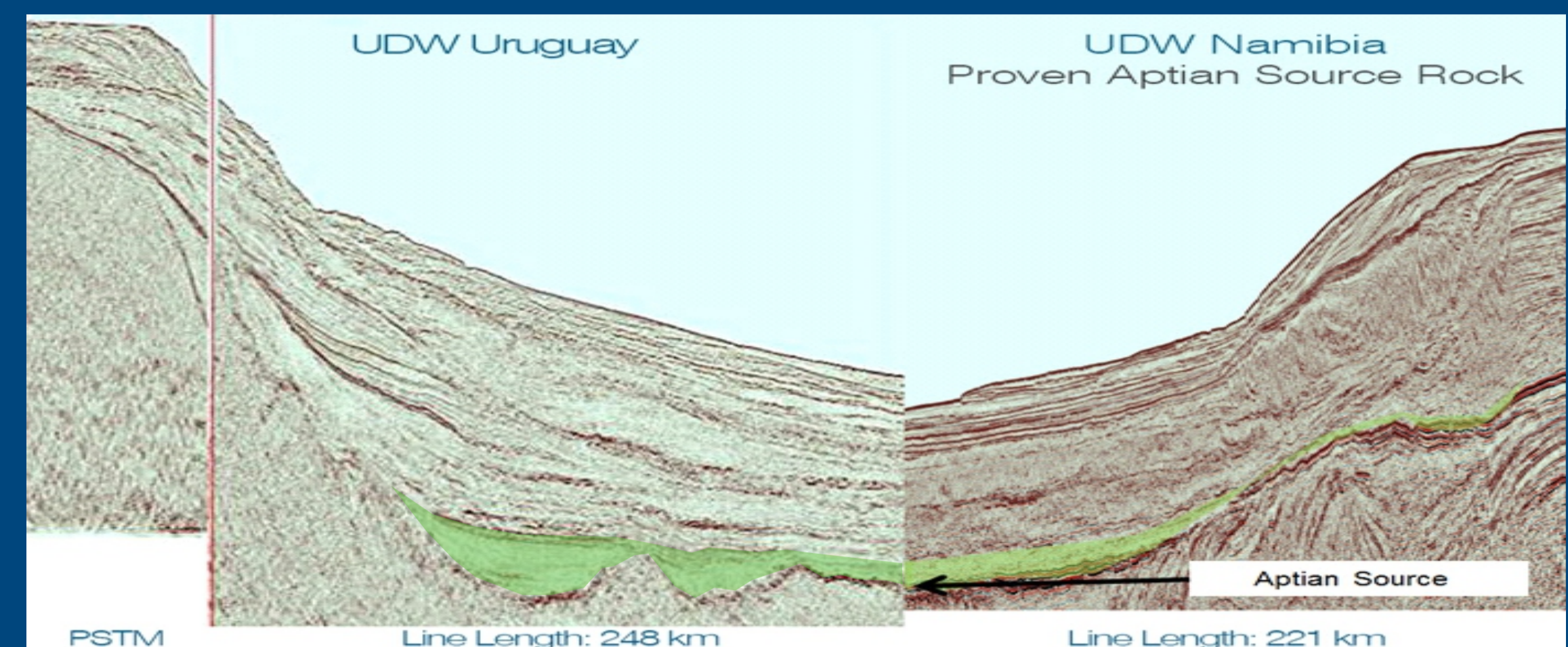
Penn et al., 2016

2D SEISMIC LINES OF THE CONJUGATE MARGINS OF URUGUAY AND NAMIBIA



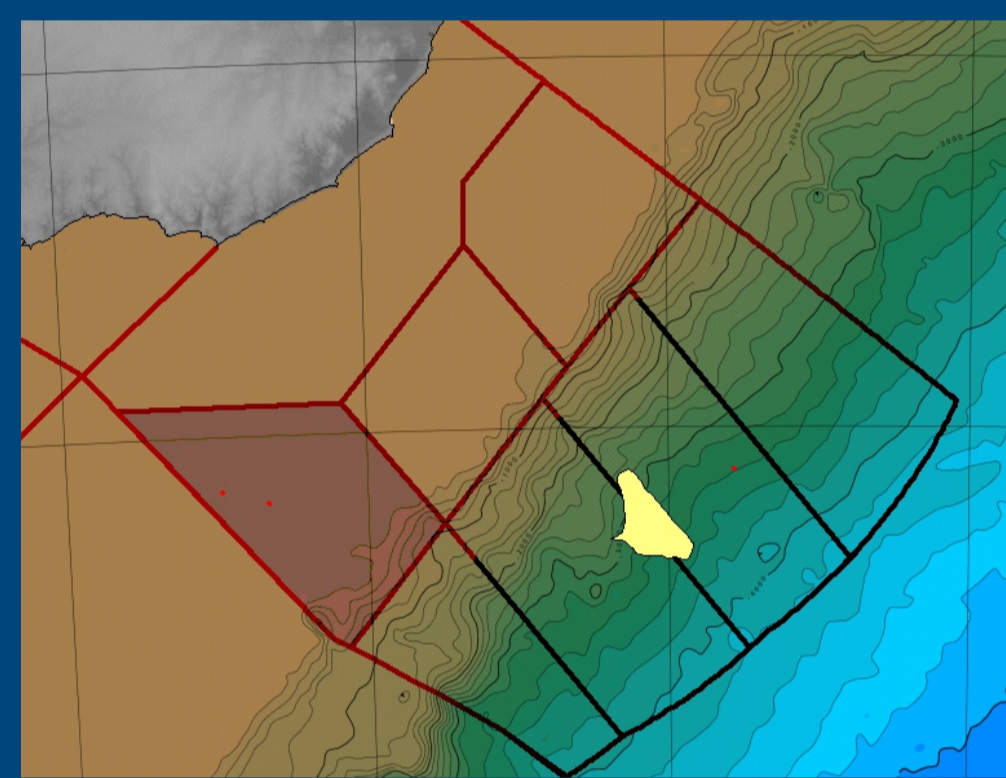
Penn et al., 2016

APTIAN SOURCE ROCK IN SEISMIC LINES OFFSHORE URUGUAY AND NAMIBIA



https://www.spectrumgeo.com/press-release/exxon-and-total-join-forces-to-drill-uruguay-1st-offshore-record-breaking-deep-water-well (2015)

DELMIRA LOCATION OFFSHORE URUGUAY

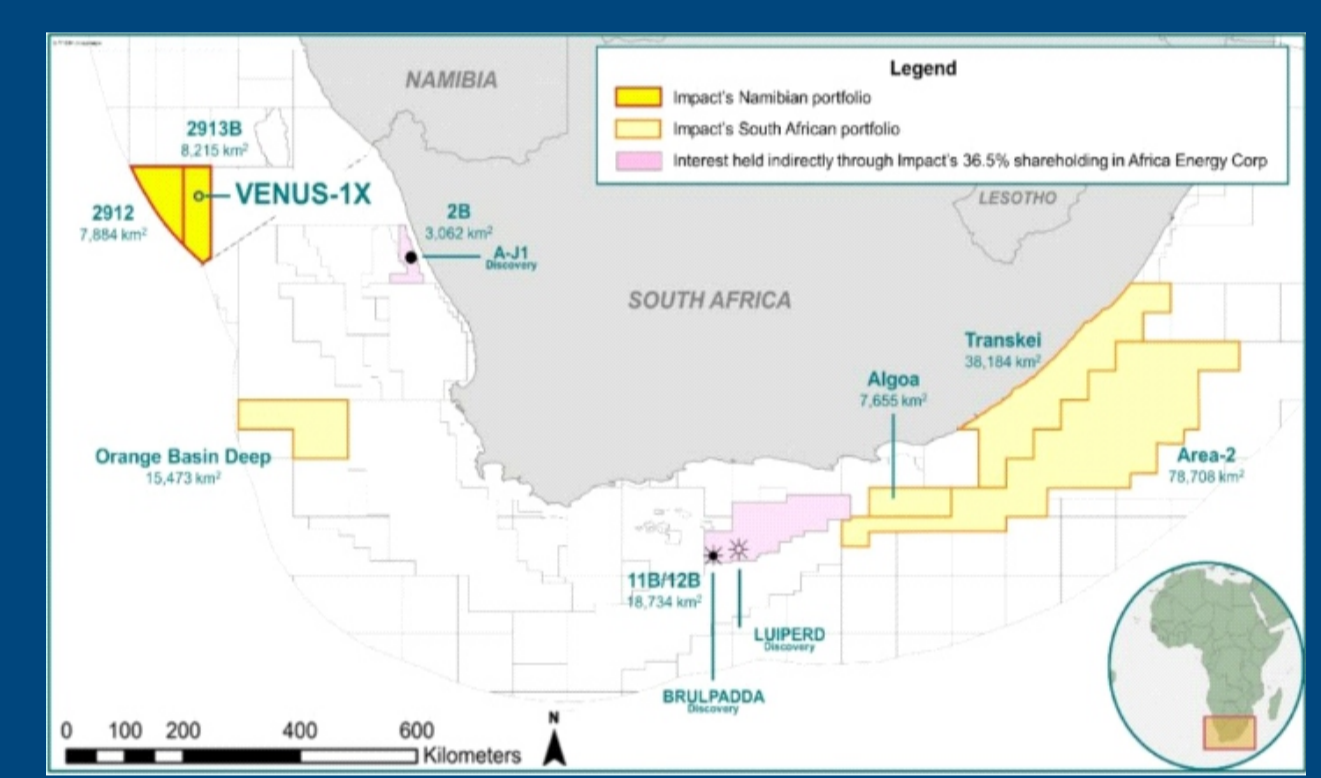


### PLAY TYPE: APTIAN-ALBIAN BASIN FLOOR FAN

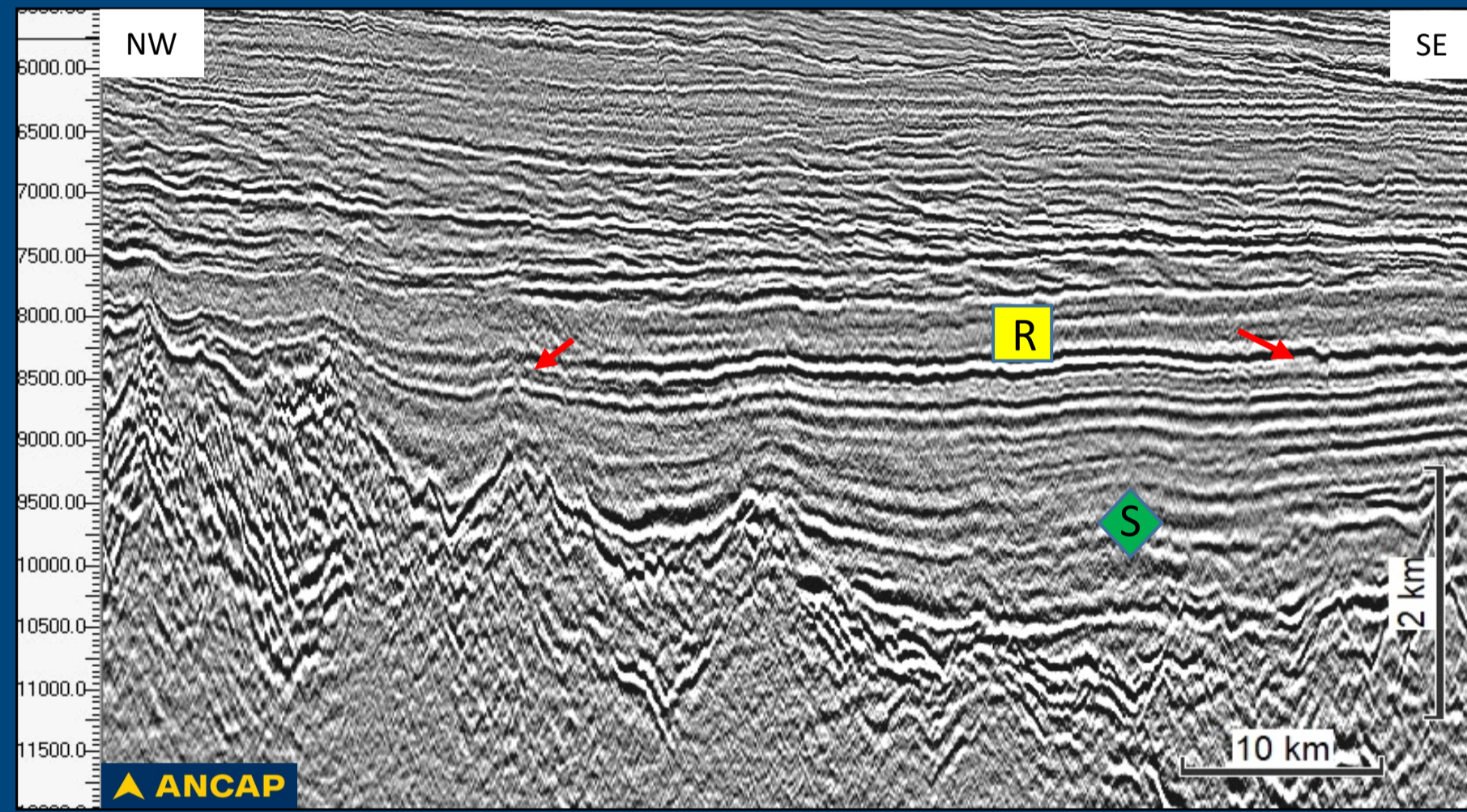
**Delmira (Uruguay):**  
Reservoir Age: Aptian-Albian  
Thickness: 44m (net pay)  
Area: 473 km<sup>2</sup>  
Bathymetry: 4,800 m  
Distance to shore: 242 km  
Recover. vol (estimate): 1.475 billion barr.

**Venus (Namibia):**  
Reservoir Age: Aptian-Albian  
Thickness: 84m (net pay)  
Area: 600 km<sup>2</sup>  
Bathymetry: 3,000 m  
Distance to shore: 292 km  
Recover. vol (estimate): 1.5-2 billion barr.

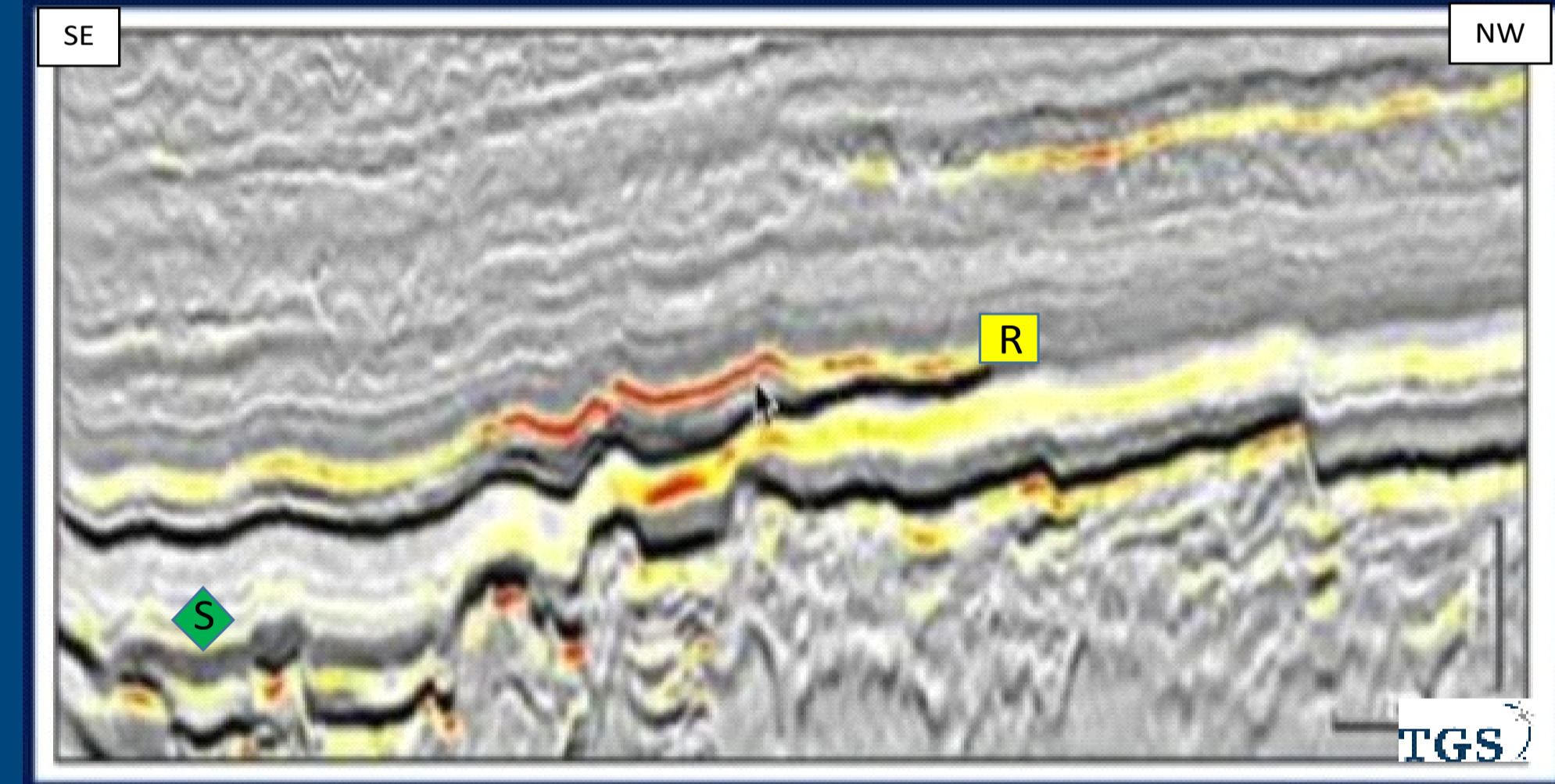
VENUS WELL LOCATION OFFSHORE NAMIBIA



DELMIRA PROSPECT IN SEISMIC

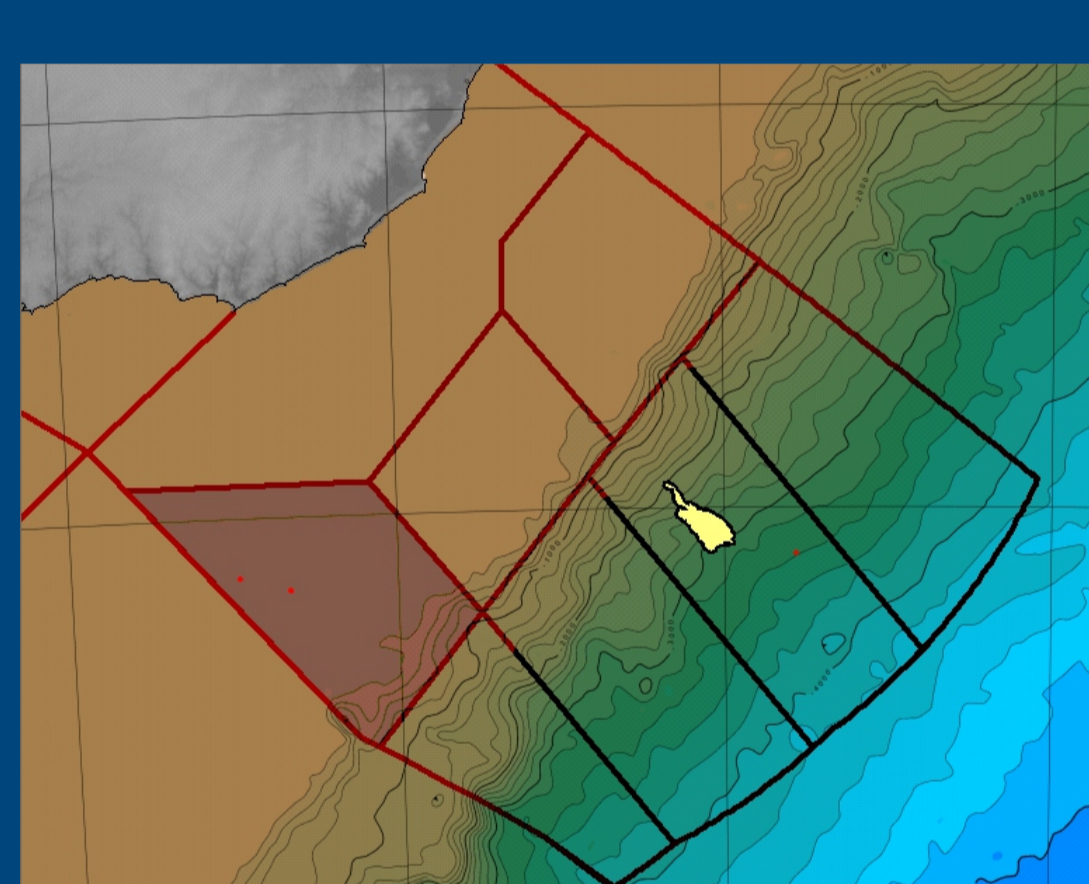


VENUS PROSPECT IN SEISMIC



https://www.youtube.com/watch?v=xgH\_0mEz7zQ&t=214s (1st Subsurface)

CHAFALOTE LOCATION OFFSHORE URUGUAY

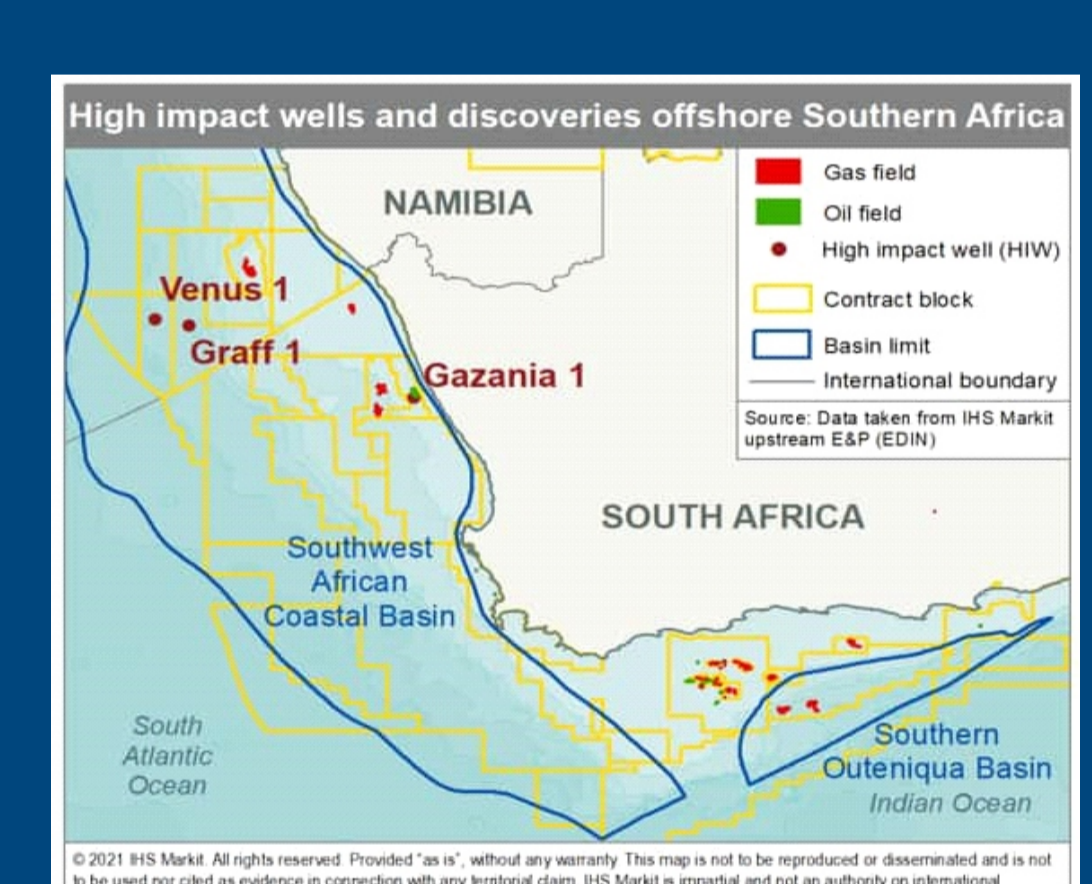


### PLAY TYPE: UPPER CRETACEOUS TURBIDITES

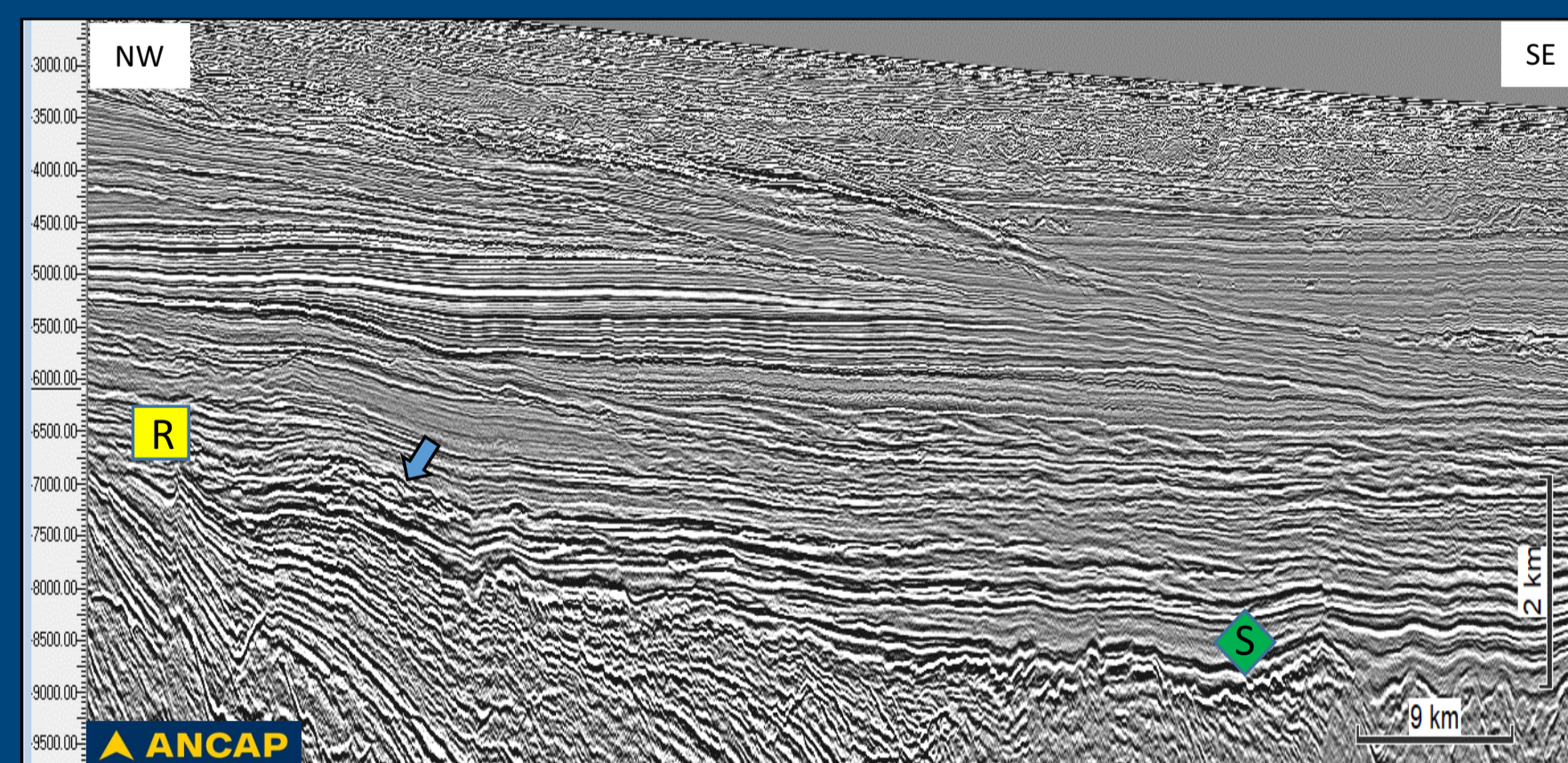
**Chafalote (Uruguay):**  
Reservoir Age: Santonian? (Upper K)  
Thickness: 92 m (net pay)  
Area: 244 km<sup>2</sup>  
Bathymetry: 2,100 m  
Distance to shore: 250 km  
Recover. vol (estimate): 2.02 billion barr.

**Graff (Namibia):**  
Reservoir Age: Santonian  
Thickness: 60 m (net pay)  
Area: N/D  
Bathymetry: 2,000 m  
Distance to shore: 270 km  
Recover. vol (estimate): 250-300 M barr.

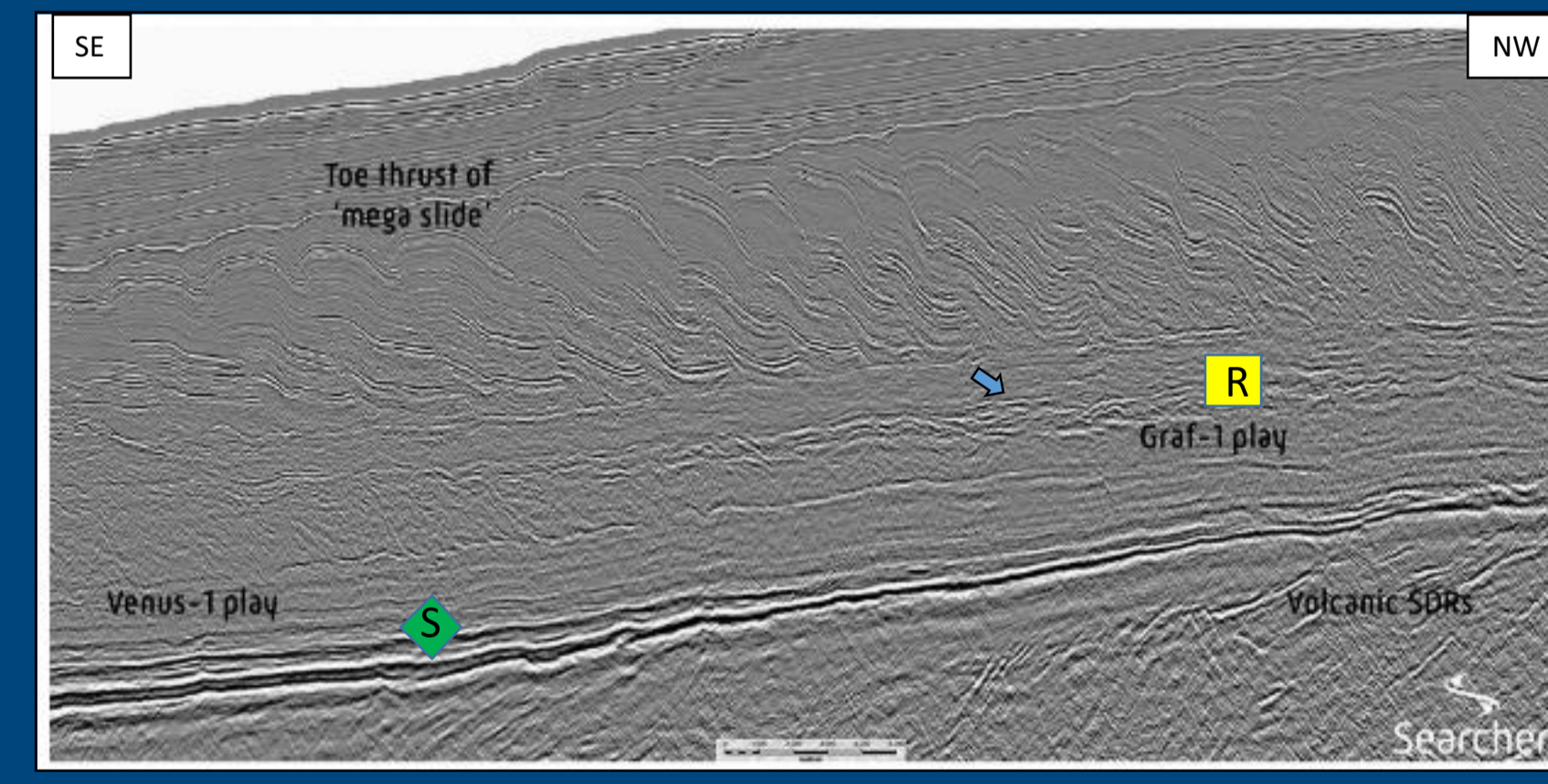
GRAFF WELL LOCATION OFFSHORE NAMIBIA



CHAFALOTE PROSPECT IN SEISMIC

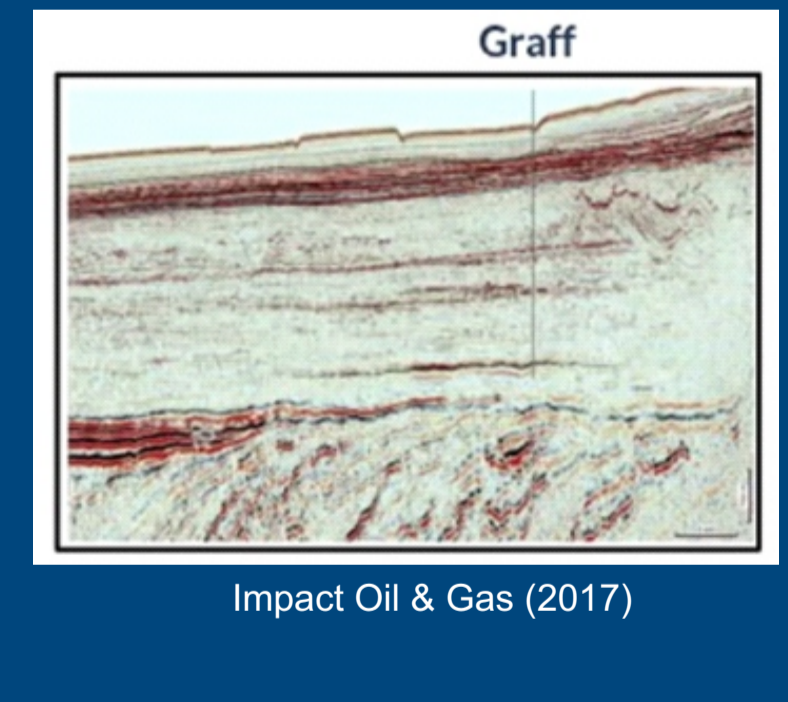


GRAFF PROSPECT IN SEISMIC



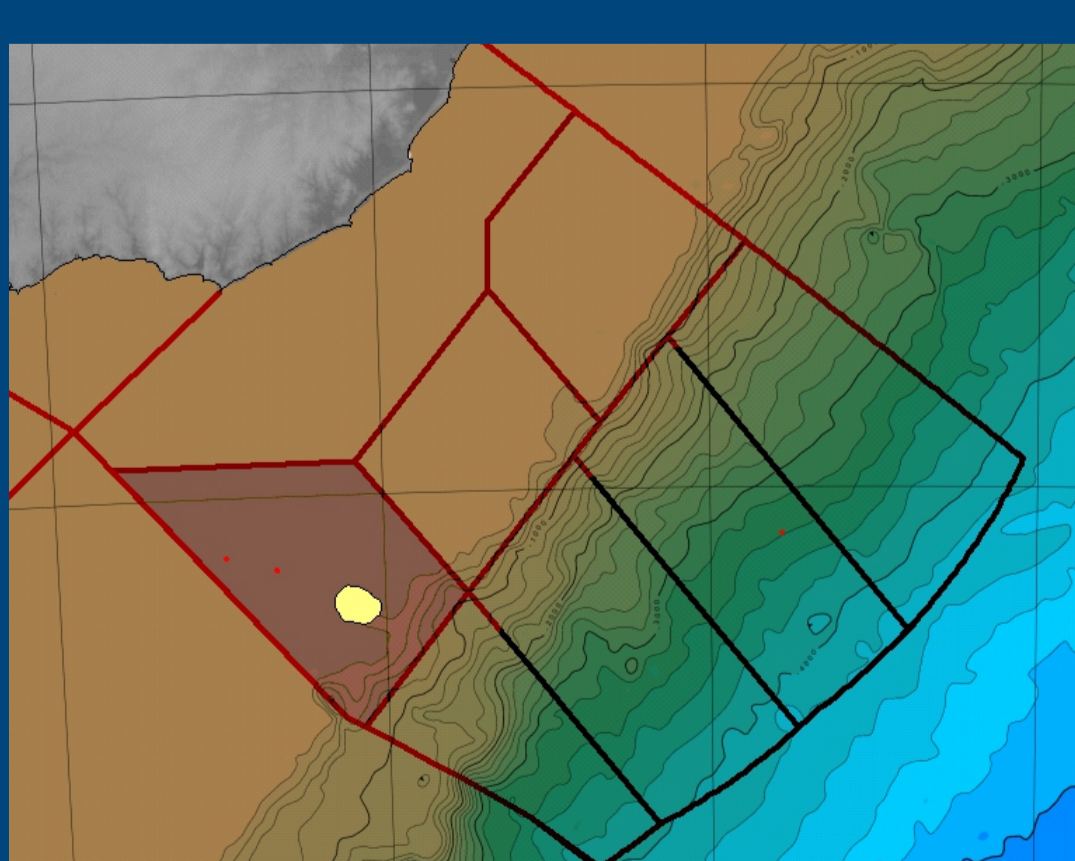
https://www.geoexpro.com/articles/2021/11/south-africa-poised-for-exploration-greatness

GRAFF ANOMALY



Impact Oil & Gas (2017)

LENTEJA LOCATION OFFSHORE URUGUAY

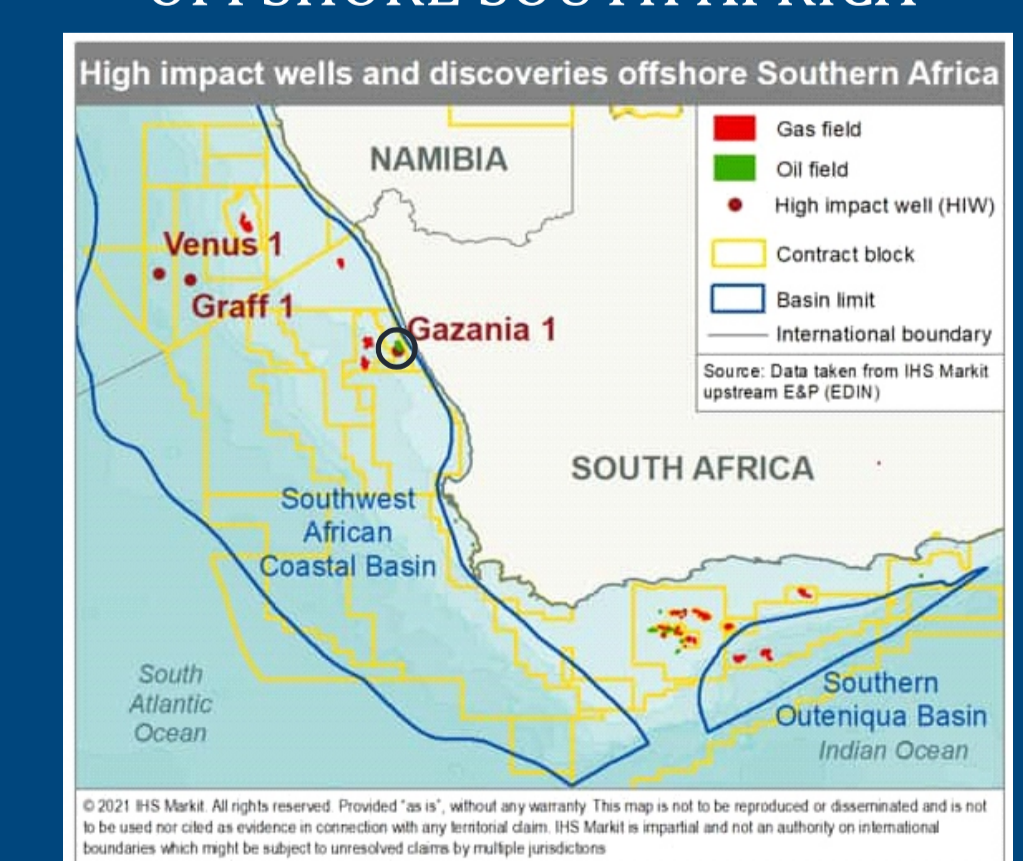


### PLAY TYPE: DELTAIC-FLUVIAL SYNRIFT SANDSTONES

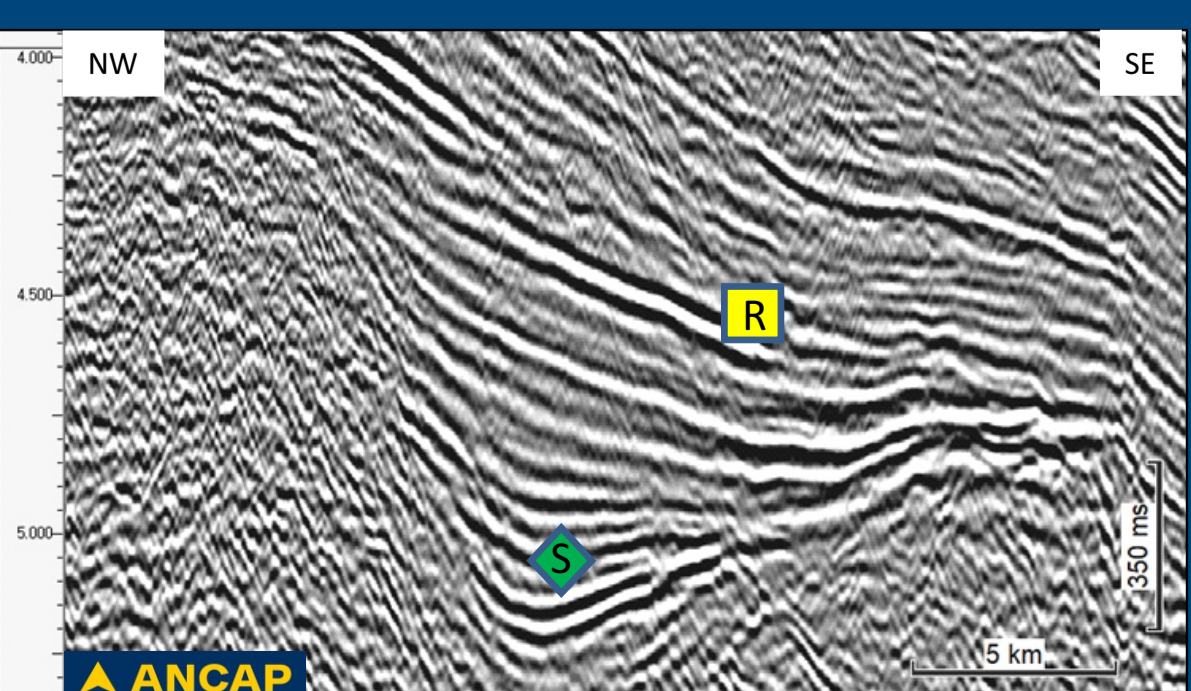
**Lenteja (Uruguay):**  
Reservoir Age: Barremian  
Thickness: 66 m (net pay)  
Area: 400 km<sup>2</sup>  
Bathymetry: 100 m  
Distance to shore: 178 km  
Recover. vol (estimate): 1,36 billion barr.

**Gazania (South Africa):**  
Reservoir Age: Barremian  
Thickness: N/D (net pay)  
Area: N/D  
Bathymetry: 150 m  
Distance to shore: 30 km  
Recover. vol (estimate): > 300 M barr.  
Oil type: 36 API (AJ1 well)

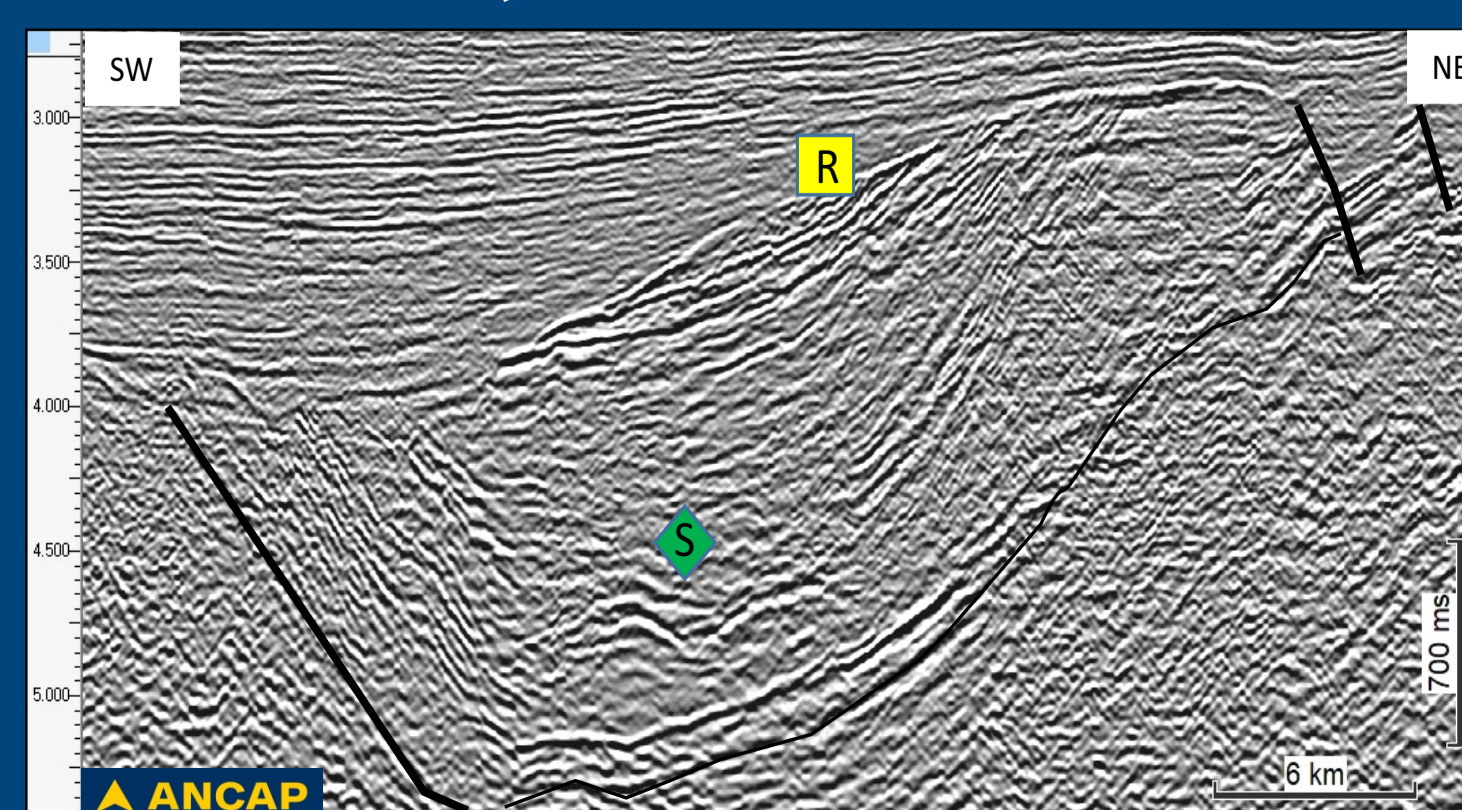
GAZANIA WELL LOCATION OFFSHORE SOUTH AFRICA



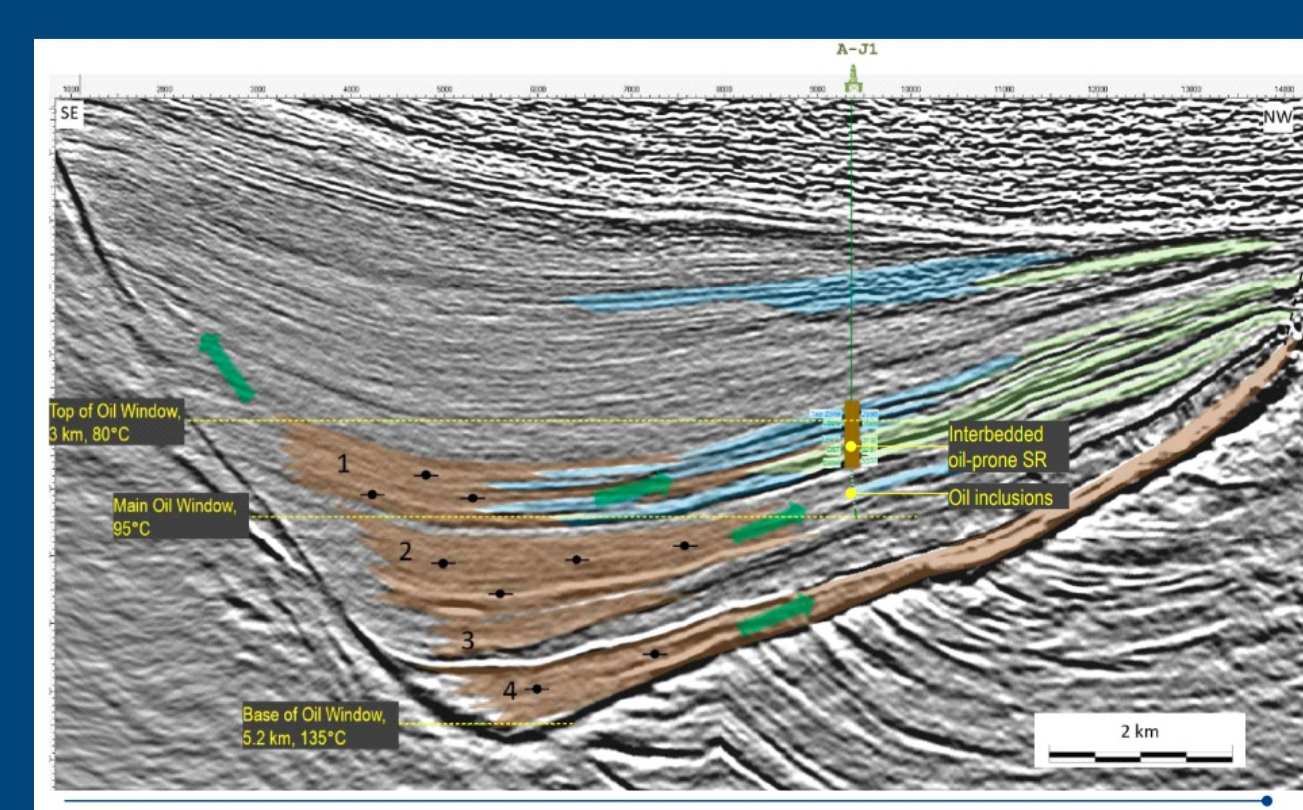
ANOTHER HALFGRABEN LEAD IN PUNTA DEL ESTE BASIN



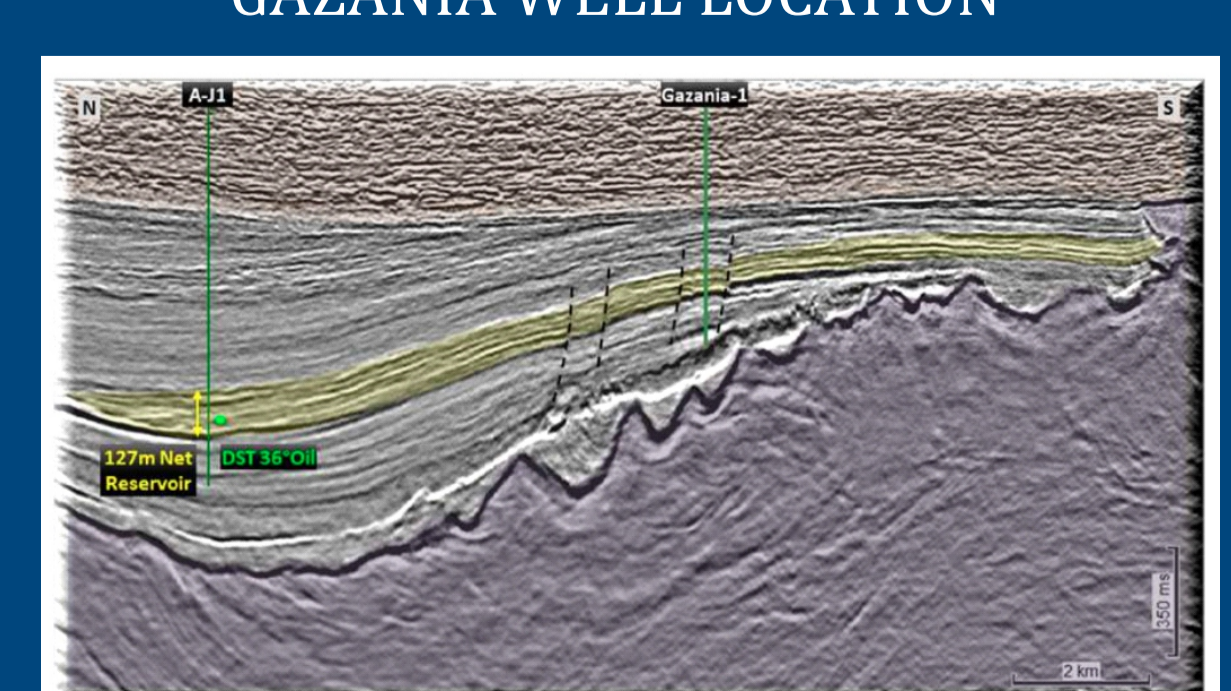
LENTEJA PROSPECT IN SEISMIC



GAZANIA PROSPECT IN SEISMIC



GAZANIA WELL LOCATION



afriacaenergygroup.com/site/assets/files/3248/2021-04-block2b-presentation.pdf