

ONSHORE DATA MARKETING

1. ONSHORE 2D SEISMIC: SC14

Field Data (SEGD), Observer Reports, Navigation Data, Survey Acquisition Reports and Processed Information (SEG-Y files with post-stacking time migration (PoSTM)) of the 2D seismic survey acquired by PanAmerican Geophysical, using seismic vibrators, in Norte Basin from July to November 2014.

Survey	Acquisition	Number of lines	kmFF	Group Interval (m)	Fold (%)	Record Length (s)
SC14 (Schuepbach)	PanAmerican, 2014	19	526,93	25 - 50	8000 - 16000	4

Table 1: 2D Seismic survey acquired by PanAmerican Geophysical in 2014

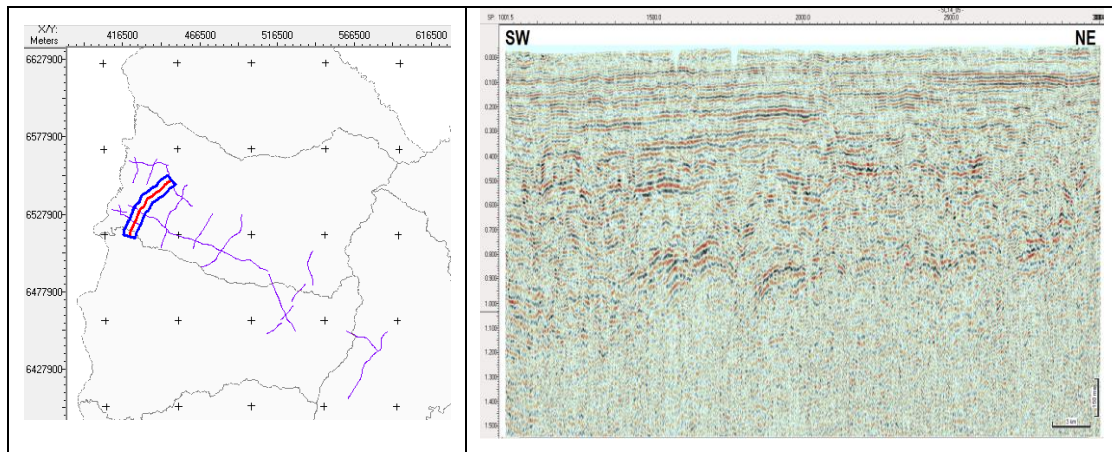


Figure 1: Example of a seismic section of the SC14 survey

2. ONSHORE 2D SEISMIC: UR84 (Reprocessed by Geofizyka Toruń)

Field Data (SEG Y), Observer Reports, Navigation Data, Survey Acquisition Reports and Processed Information (SEG Y files with pre-stacked time migration (PSTM)) of the 2D seismic survey acquired by Western Geophysical, using seismic vibrators, in Norte Basin during 1984 and 1985. Geofizyka Toruń reprocessed these data, for Total, during 2014.

Survey	Acquisition	Number of lines	kmFF	Group Interval (m)	Fold (%)	Record Length (s)
UR84 (ANCAP)	WESTERN, 1984-1985	33	1576	35 - 80	2400 - 4800	7 – 15

Table 2: 2D Seismic survey acquired by Western Geophysical in 1984-1985

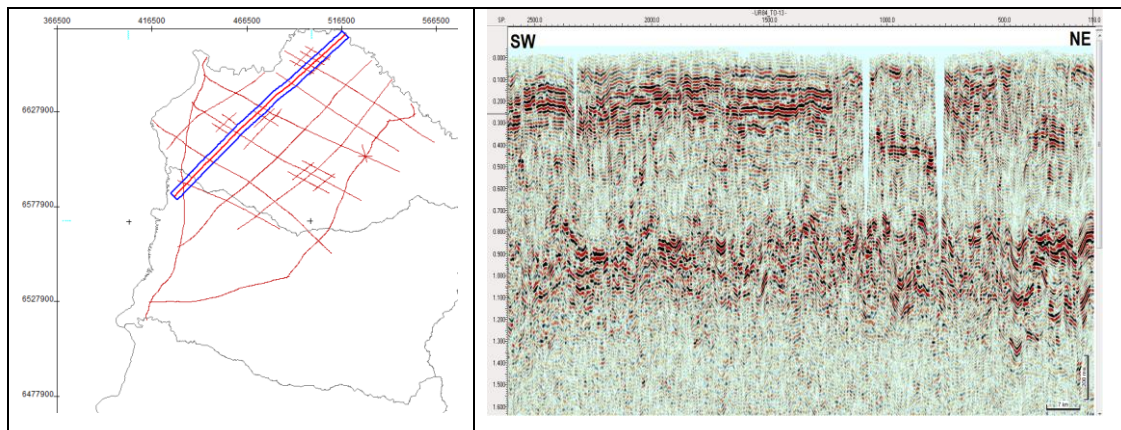


Figure 2: Example of a seismic section of the UR84 survey reprocessed by Geofizyka Toruń

3. PRICES

Product	Price
2D Seismic data	
SC14, UR84 repro	100 USD/km
Complete surveys SC14 + UR84 repro	USD 160.000

Notes:

- All logistics (including courier), copying and data management costs should be covered and carried out by the company licensing the data
- For logistic purposes, please note that the field and processed data are available at ANCAP's headquarters in Montevideo
- ANCAP can only provide copy of complete 2D lines