



## ONSHORE DATA MARKETING

### **1. ONSHORE DATAPACKAGE**

#### WELL INFORMATION

Logs in LAS format (SP, Resistivity, Micro-resistivity, Caliper) and PDF Documents (Lithological logs, Drilling Reports) digitized from the originals, for the following wells drilled by ANCAP between 1956 and 1958:

- NO\_01\_G\_X1 – GASPAR (TD = 2,298 m) (includes scanned Dipmeter in PDF)
- NO\_02\_A\_X2 – ARTIGAS 2 (TD = 1,857 m)
- NO\_03\_S\_X1 – SALTO (TD = 2,204 m)
- NO\_04\_Q\_X1 – QUEBRACHO (TD = 1,109 m)
- NO\_05\_Gu\_X1 – GUICHÓN (TD = 928 m)
- NO\_06\_Sp\_X1 – SALSIPUEDES (TD = 547 m)

Logs in LAS format (Gamma Ray (GR), GR Spectrometry, Sonic (DT), Resistivity and Induction, Bulk Density (RHOB), Density Porosity (DPHI), Neutron Porosity (NPHI), Caliper, Temperature, Spontaneous Potential (SP)) and PDF or TIFF documents (Lithological Logs, Seismic Calibration, Drilling Reports), digitized from the originals, for the following wells drilled by ANCAP between 1986 and 1987:

- NO\_07\_P\_X1 – PELADO (TD = 2,006 m)
- NO\_08\_Y\_X1 – YACARÉ (TD = 2,389 m)
- NO\_09\_B\_X1 – BELÉN (TD = 2,366 m)
- NO\_10\_I\_X1 – ITACUMBÚ (TD = 2,099 m)

Additionally, it includes Geochemical, Petrophysical and Palynological Analysis Reports, as well as related documents for selected samples (cuttings and cores).

## GEOPHYSICAL INFORMATION

- Field Data (in SEGY format), Observer Reports, Navigation Data, Survey Acquisition Reports and Processed Information (SEGY files transcribed from original tapes and scanned sections) of the 2D seismic survey acquired by Western Geophysical, using seismic vibrators, in Norte Basin during 1984 and 1985.

Survey	Acquisition	Number of lines	km	Group Interval (m)	Fold	Record Length (s)
UR84 (ANCAP)	WESTERN, 1984-1985	33	1,650	35 - 80	24 - 48	7 – 15

**Table 1:** 2D Seismic survey acquired by Western Geophysical in 1984-1985

- Field and processed gravimetric data acquired in the Norte Basin (in ASCII format, digitized from original maps and field books)
- UR84 Seismic reprocessed by YPF (1,645 km / 33 lines). Kirchhoff Pre-Stack Time Migration (PSTM)

## GEOCHEMICAL INFORMATION

- Surface Geochemistry
- Digital analysis of multi-spectral information
- Trace Elements Analysis
- Microbacteriological analysis (MPOG) of butanotrophic bacteria

All this information is included in PDF format, as well as Excel files with geochemical data and maps.

### Wells Information Geochemistry

Organic geochemical analyses of gray to black shales from the stratigraphic wells Pepe Núñez E-1b (drilled in 2012) and Cañada del Charrúa E-2 (drilled in 2013). These analyses include: TOC, Rock Eval and kerogen microscopy (kerogen type, vitrinite reflectance, etc.). In the Pepe Núñez E-1b well, conventional geochemical analyses (main elements and traces) are also included. These results are available in Excel files.

## 2. SANTA LUCÍA BASIN DATAPACKAGE

### WELL INFORMATION

Logs in LAS format (SP, Resistivity, Micro-Resistivity, Caliper) and documents in PDF or JPG format (Lithological Log, Drilling Reports) digitized from the originals, for the following wells drilled by ANCAP between 1955 and 1959:

- SL\_02\_SJ\_X2 – SAN JACINTO 2 (TD = 1,199 m)
- SL\_03\_SJ\_X3 – SAN JACINTO 3 (TD = 1,243 m)
- SL\_04\_SJ\_X4 – SAN JACINTO 4 (TD = 1,231 m)
- SL\_05\_S\_X1 – SAUCE 1 (TD = 2,459 m)
- SL\_06\_P\_X1 – PROGRESO (TD = 838 m)
- SL\_07\_S\_X2 – SAUCE 2 (TD = 1,691 m)
- SL\_08\_B\_X1 – LAS BRUJAS (TD = 719 m)
- SL\_09\_C\_X1 – CASTELLANOS (TD = 2,026 m)
- SL\_10\_Co\_X1 – COCHENGO (TD = 318 m)
- SL\_11\_PS\_X1 – PIEDRA SOLA (TD = 1,598 m)

Logs in LAS format (Electrical, Micro-resistivity, Gamma Rays (GR), Sonic (DT), Induction, Gross Density (RHOB), Density Porosity (DPHI), Neutron Porosity (NPHI), Caliper) and documents in PDF or JPG (Lithological Log, Seismic Calibration, Dipmeter, Drilling Reports), digitized from the originals, for the following wells drilled by ANCAP between 1978 and 1979:

- SL\_12\_SB\_X1 – SAN BAUTISTA (TD = 1,954 m)
- SL\_13\_T\_X1 – TALA (TD = 1,749 m)

Additionally, this Datapackage includes Geochemical, Petrophysical and Palynological Analysis Reports, as well as related documents for selected samples (cuttings and cores).

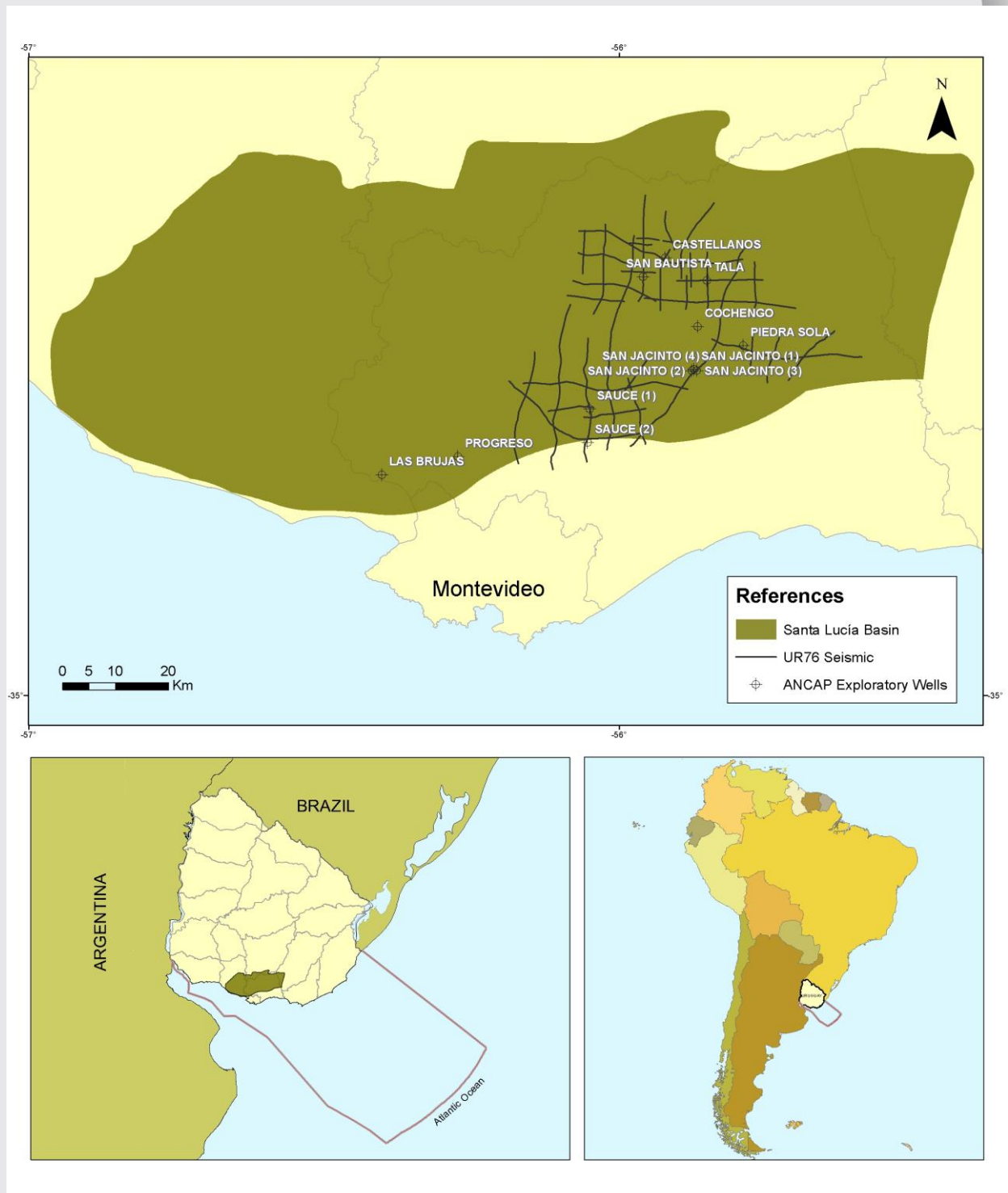
### GEOPHYSICAL INFORMATION

- Field Data (in SEG Y format), Observer Reports, Navigation Data, Survey Acquisition Reports and Processed Information (scanned seismic sections in TIFF format and vectorized sections in SEG Y format) of the 2D seismic survey acquired by YPF, with explosive sources, in Santa Lucia Basin during 1975 and 1976.

Survey	Acquisition	km	Group Interval (m)	Channels	Fold	Record Length (s)
UR76 (ANCAP)	YPF, 1975-1976	625	50 - 75	24	6	3

**Table 2:** 2D Seismic campaign acquired by YPF in 1975-1976

- Filed and processed gravimetric data acquired in Santa Lucia Basin (in ASCII format, digitized from original maps and field books).



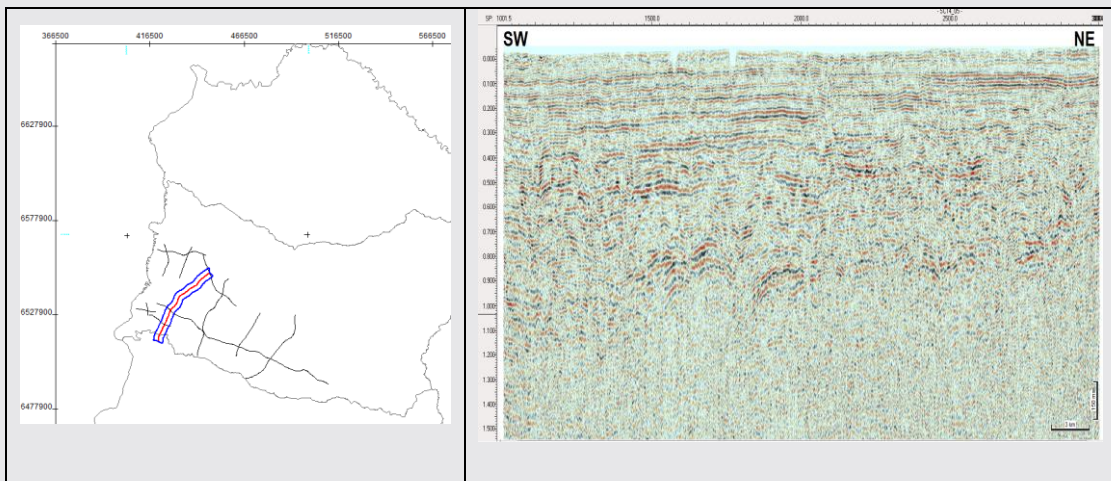
**Figure 1:** 2D Seismic and wells in Santa Lucía Basin included in the datapackage

### 3. ONSHORE 2D SEISMIC: SC14

Field Data (SEG Y), Observer Reports, Navigation Data, Survey Acquisition Reports and Processed Information (SEG Y files with post-stacking time migration (PoSTM)) of the 2D seismic survey acquired by PanAmerican Geophysical, using seismic vibrators, in Norte Basin from July to November 2014.

Survey	Acquisition	Number of lines	km	Group Interval (m)	Fold	Record Length (s)
SC14 (Schuepbach)	PanAmerican, 2014	12	414	25 - 50	80 - 160	4

**Table 3:** 2D Seismic survey acquired by PanAmerican Geophysical in 2014



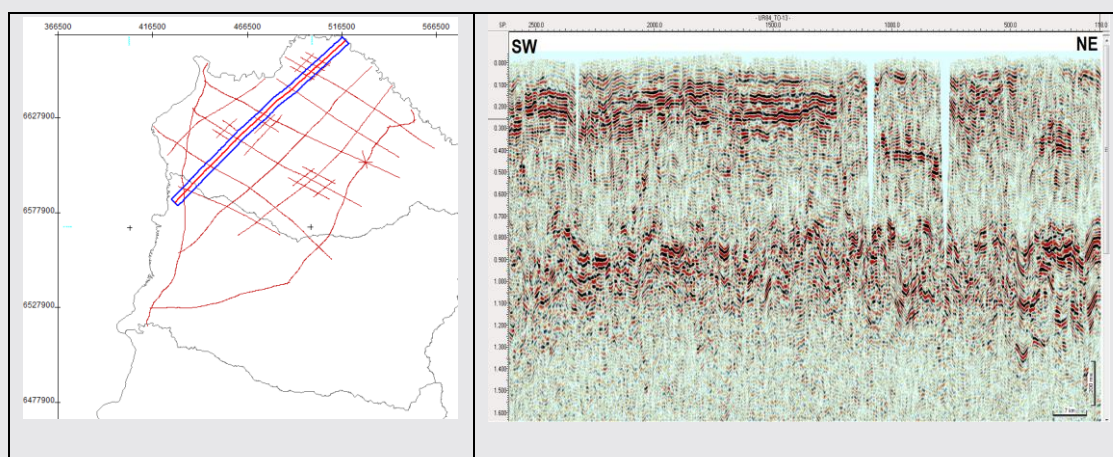
**Figure 2:** Example of a seismic section of the SC14 survey

#### 4. ONSHORE 2D SEISMIC: UR84 (Reprocessed by Geofizyka Toruń)

Field Data (SEG Y), Observer Reports, Navigation Data, Survey Acquisition Reports and Processed Information (SEG Y files with pre-stacked time migration (PSTM)) of the 2D seismic survey acquired by Western Geophysical, using seismic vibrators, in Norte Basin during 1984 and 1985. Geofizyka Toruń reprocessed these data, for Total, during 2014.

Survey	Acquisition	Number of lines	km	Group Interval (m)	Fold	Record Length (s)
UR84 (ANCAP)	WESTERN, 1984-1985	33	1,650	35 - 80	24 - 48	7 - 15

**Table 4:** 2D Seismic survey acquired by Western Geophysical in 1984-1985



**Figure 3:** Example of a seismic section of the UR84 survey (reprocessed by Toruń Geofizyka)

## 5. PRICES AND PURCHASE OPTIONS

Product	Price
Onshore Datapackage	
Purchasing RUA Bidding Round Terms (USD 5,000)	Complimentary
Without purchasing RUA Bidding Round Terms	USD 10,000
Santa Lucía Basin Datapackage	USD 10,000
2D Seismic data	80 USD/Km
<b>Purchase Options</b>	
In case of acquiring onshore data for an amount exceeding USD 120,000, the “Onshore Datapackage” will be delivered free of charge.	

RUA: Ronda Uruguay Abierta (Open Uruguay Round)

### Notes:

- All logistics (including courier), copying and data management costs should be covered and carried out by the company licensing the data
- For logistic purposes, please note that the field and processed data are available at ANCAP's headquarters in Montevideo
- ANCAP can only provide copy of complete 2D lines